

Летшач

ГРАЂЕВИНСКО ПРЕДУЗЕЋЕ
CONSTRUCTION COMPANY

INDUSTRIAL HALL
FOR RENT



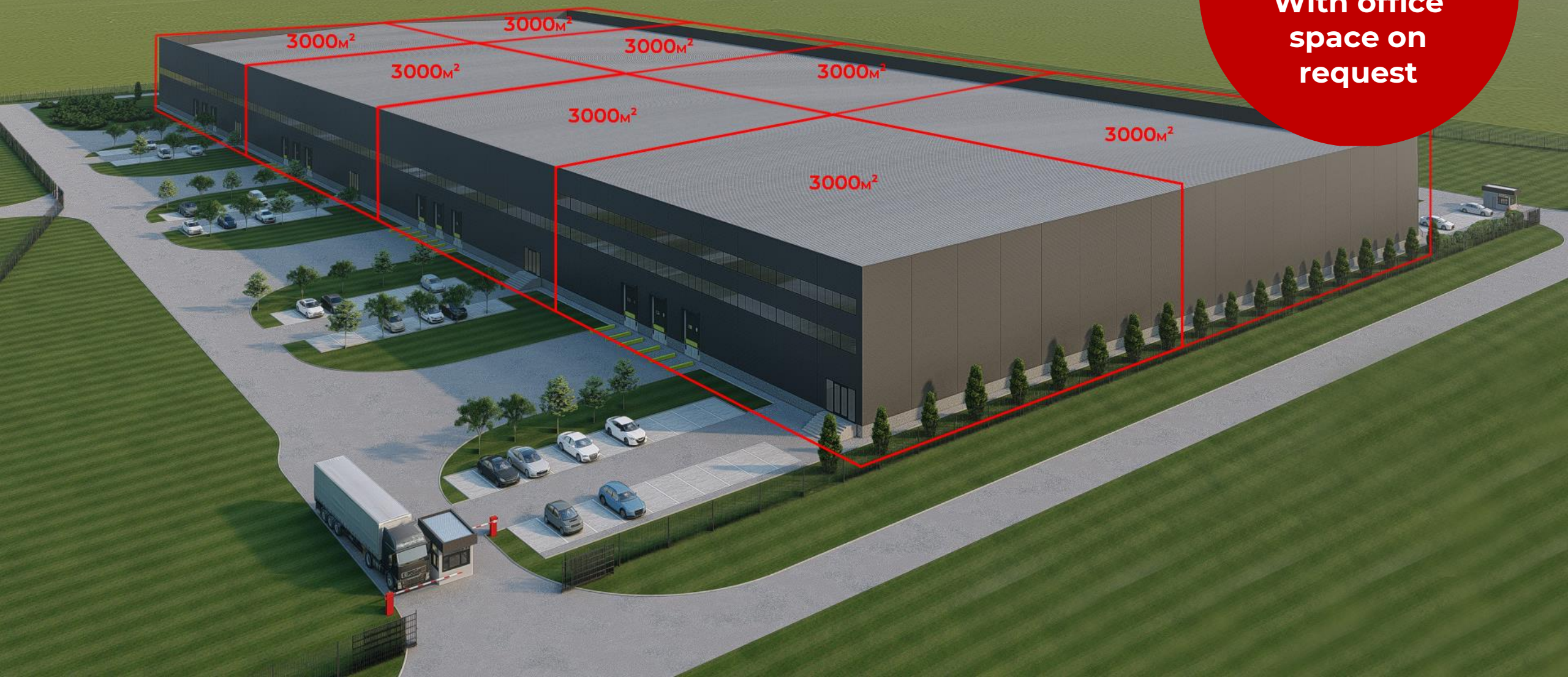


Total surface
24.000 m²

The building has a total of **24,000 m²**
It is divided into **8 separate units of 3,000m²**
Intended exclusively for renting.



**Separate cells
3000 m²
With office
space on
request**



Technical characteristics



Electricity:
in accordance with the request

Types of materials:
concrete structure and sandwich panels

Heating:
in accordance with the request

Number of parking spaces:
in accordance with the request

Estimated deadline for the completion of the facility:
9 months

Location

Located in the **heart of Europe**, offers a strategic location for investors.

Proximity to key European markets makes it an attractive hub for industrial activities.

Serbia's geographic location **connects Eastern and Western Europe**, providing **excellent market access**.

Borders with Hungary, Romania, Bulgaria, Croatia, and North Macedonia facilitate cross-border trade.

Boasts a diverse and growing economy, with **a strong industrial sector**.



Location

Šimanovci is a settlement in the Pećinci municipality in the Srem district, 28 km from Belgrade on the E70 highway, only 10 km from Nikola Tesla International Airport.

From the building to the connection to the highway the distance is 1.5 km



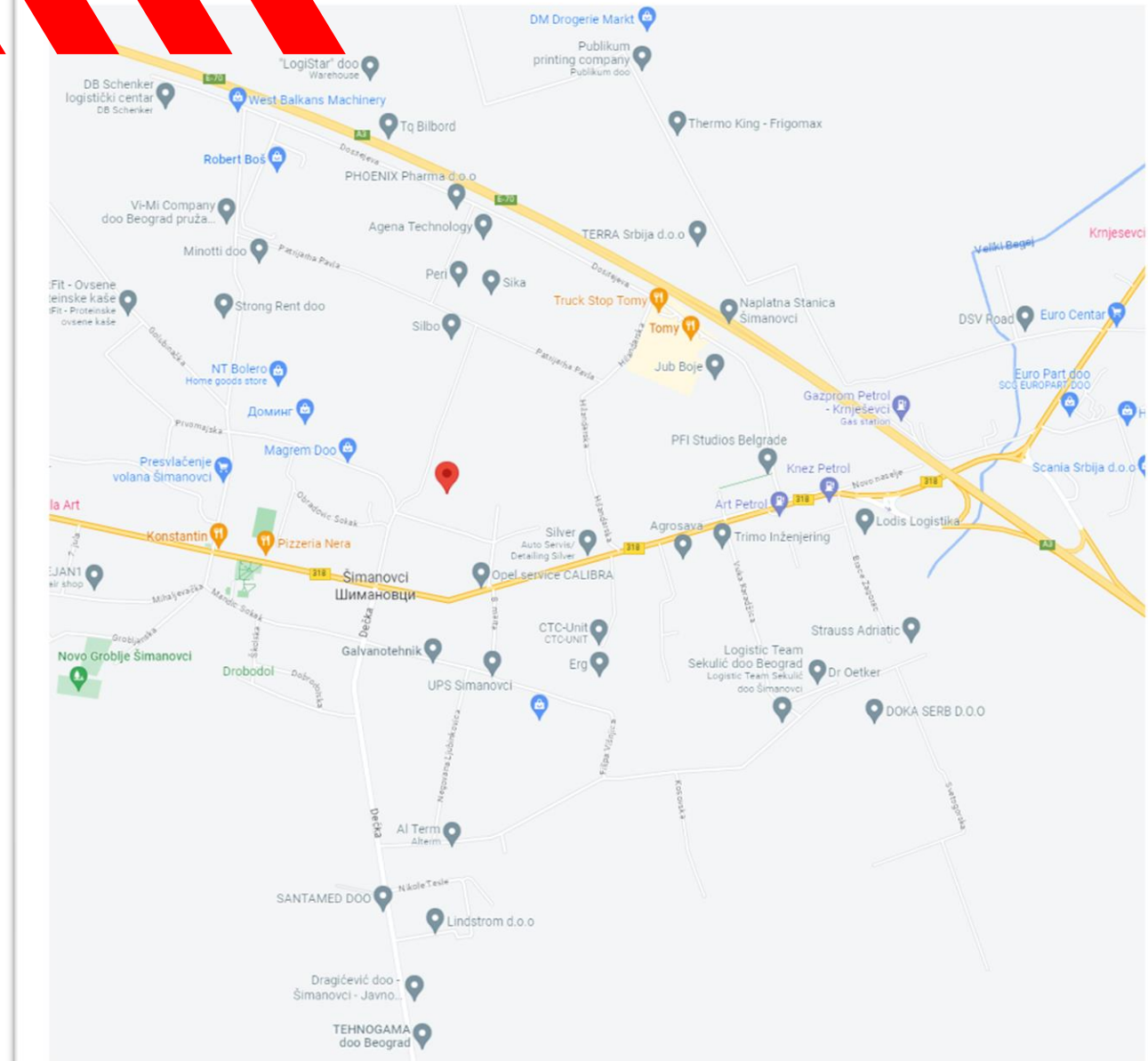
Distance from
airport
10 km



Distance from
Belgrade
20 km

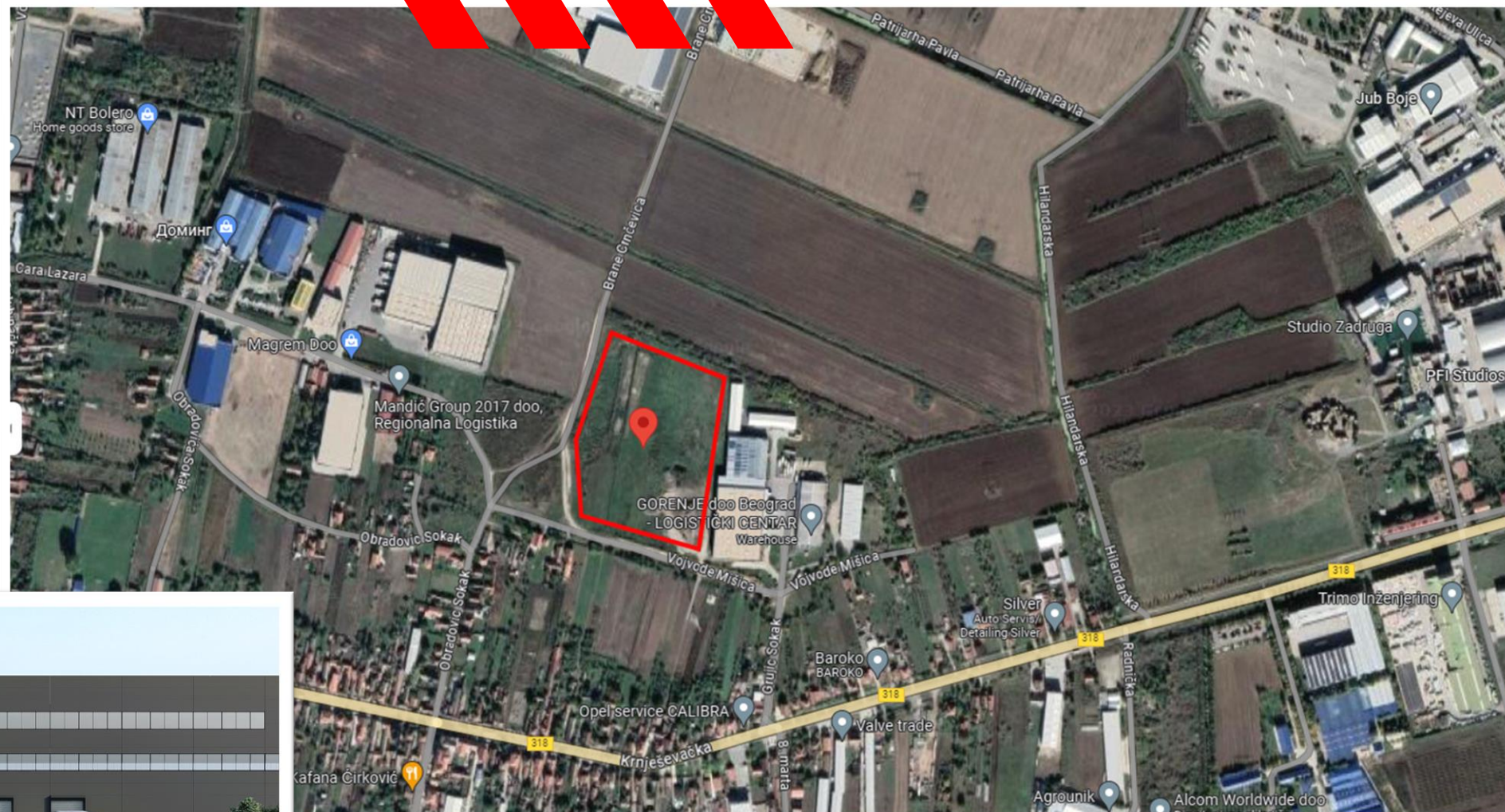


Ruma - 20 km
S. Mitrovica - 40 km
Zagreb - 400 km



Location

MICRO LOCATION



Industrial facilities nearby

DONCAFÉ.



Mercedes-Benz



SCANIA



BOSCH

W:M
WestBalkansMachinery



ca Chemical
Agrosava



KLEEMANN





Thank you!

Thank you for your attention

 2023

CONTACT:
MILOŠ SAVIĆ
milos@letac.rs
+381 64 822 61 03